

ER SERIES

ERSERIES

MULTIPURPOSE LED DISPLAYS

VUEPIX
INFILED



The VuePix Infiled ER Series offers advanced, high performance panels designed for indoor and outdoor applications.

The ER Series panels are light weight, slim, and durable, equipped with user-friendly features like ergonomic handles for convenient handling, positioning pins and magnets for easy alignment, and a fast locking system. The Quick Swap power and control unit allows servicing of the screen with minimal down time.

The high ingress protection rating (IP65 front, IP54 rear) makes the ER series outdoor panels suitable for projects where the screen will be exposed to the elements. The optional front service access greatly improves the maintenance and servicing process.



KEY FEATURES

- ▶ Separate and exchangeable power and control unit
- ▶ 'Fast lock system' & positioning pin for quick & easy assembly
- ▶ IP65 protection for outdoor use (certain models)
- ▶ Easy front service access options (certain models)
- ▶ Ergonomically designed handle for easy handling



IP65



HOT SWAP



THIN



ENERGY EFFICIENT



LIGHT WEIGHT



RENTAL

SETUP AND ALIGNMENT

- ▶ Equipped with ergonomic handles for convenient manoeuvring



- ▶ Magnets on the top and bottom of the frame for pre-lock assistance

- ▶ 'Fast lock system' for easy assembly

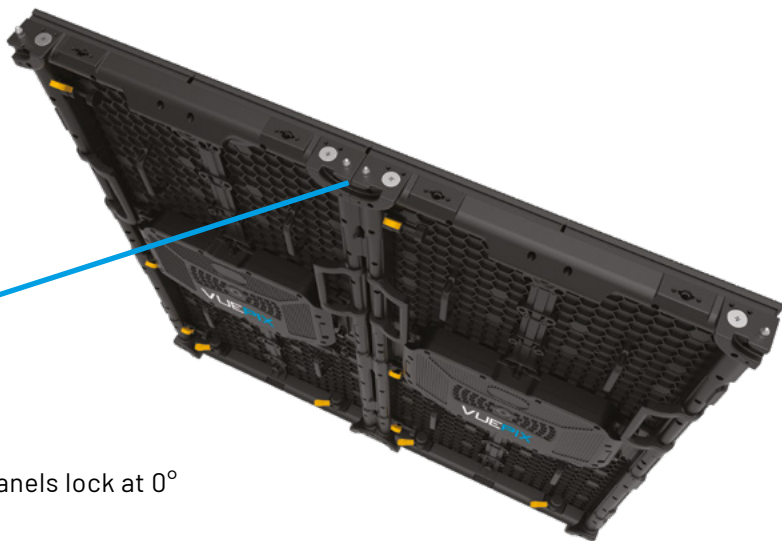


- ▶ Positioning pins for quick and easy alignment

STRAIGHT SYSTEM

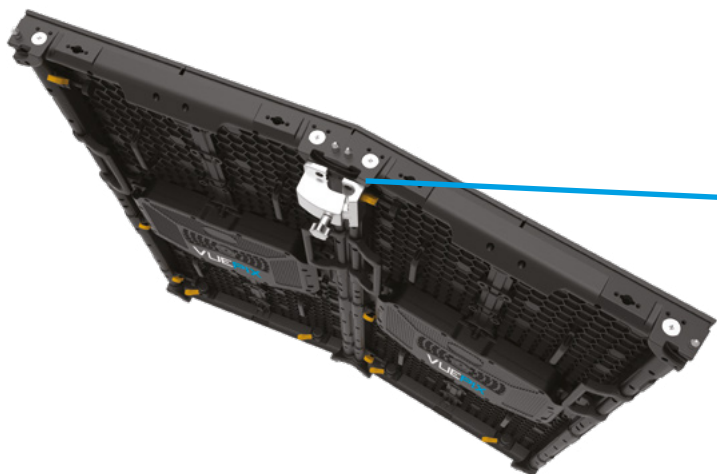
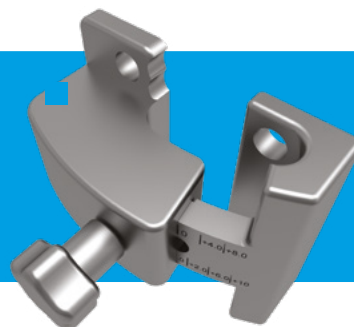


▶ Panels lock at 0°



▶ ANGLE COUPLERS (OPTIONAL)

Curved displays can be achieved by using special angle couplers.



▶ Angle coupler required

CURVED SYSTEM

HANGING SYSTEM

▶ Truss Brackets

Truss bars are available in different sizes and modifications for straight or curved applications.



STACKING SYSTEM

▶ Stacking Pedestal

Pedestals are available for double and triple panel configurations.



MODULE ACCESS

- ▶ Front and rear maintenance systems available to suit your application.



POWER & DATA UNIT

- ▶ Power & control unit can be easily exchanged with no tools required.



CLIMBING HANDLES

- ▶ Climbing handles can be added for easy access & maintenance during large scale applications.

TOURING TROLLEY CART

- ▶ ER series touring carts are designed to store and transport ER panels in pre-rigged mode, minimising the set-up during rental applications.

The carts are robust and durable and are available in 2 sizes (single or double stacked), holding up to 28 ER cabinets.

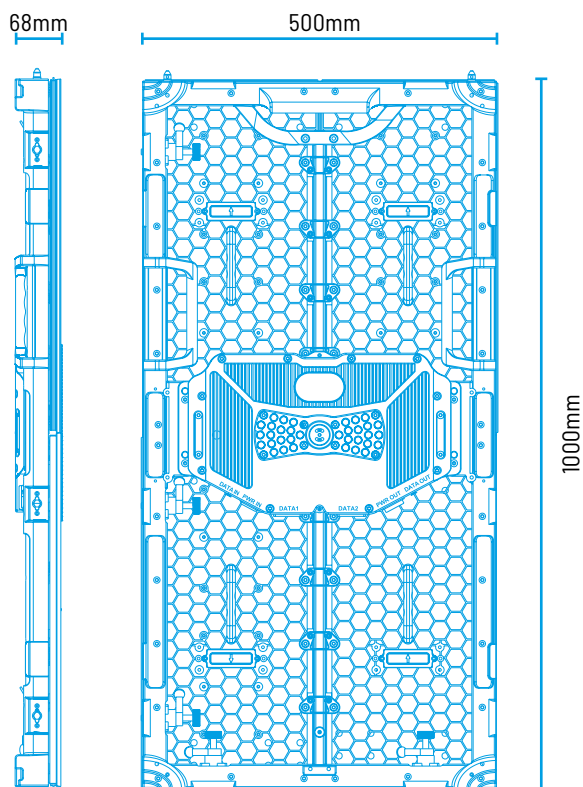
The standard industry size of the touring cart perfectly fits into trucks for easy and efficient transport.



- ▶ **Increase Efficiency**
Designed to minimise the set-up time and boost the efficiency of your team!

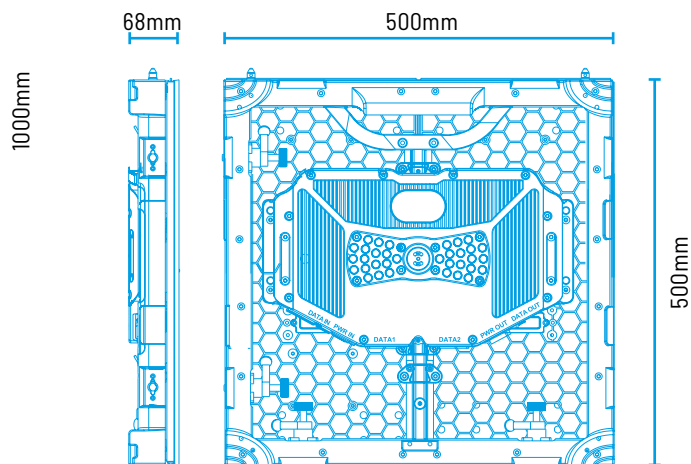
- ▶ **Industry Standard**
The standard industry size to fit perfectly into trucks for easy and efficient transport - 1150mm wide by 800mm deep.





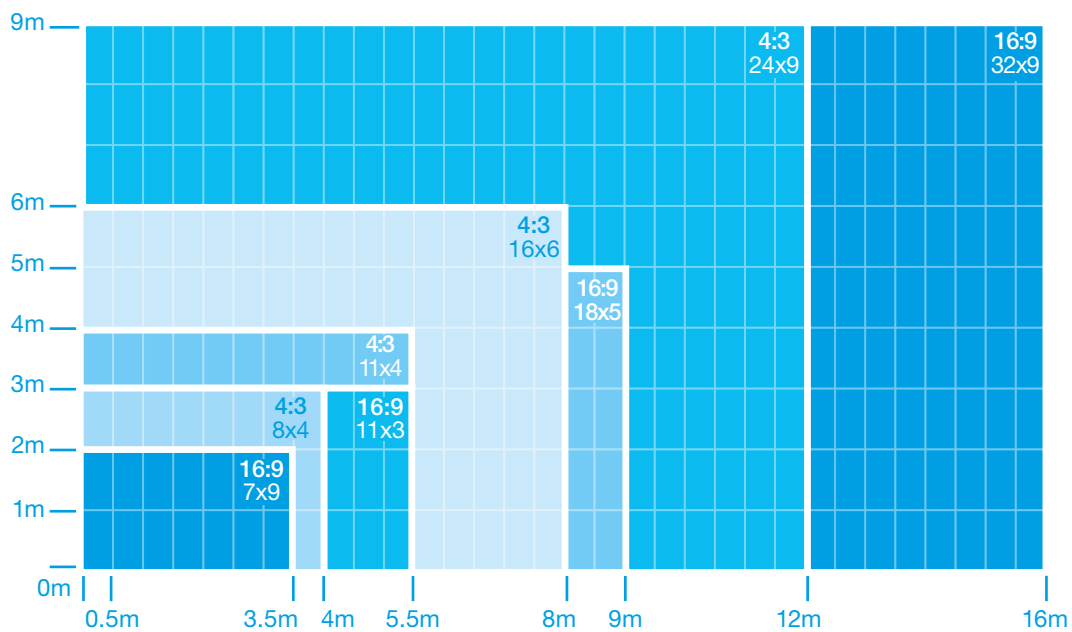
■ HALF SIZE PANELS

500mm x 500mm available on request.



PANEL DIAGRAM ▲

▼ DISPLAY RATIOS



SPECIFICATIONS

	ER2	ER3.4	ER3.9	ER4.6
Pixel Pitch	2.97mm	3.47	3.91mm	4.63mm
Product Application	Indoor / Rental	Indoor / Rental	Indoor / Outdoor / Rental	Outdoor / Rental
LED Arrangement	3 IN 1 SMD	3 IN 1 SMD	3 IN 1 SMD	3 IN 1 SMD
Brightness Level	1,200nits	1,000nits	Indoor 1,200nits Outdoor 5,000nits	5,000nits
Refresh Rate	≤ 3,840Hz	≤ 3,840Hz	≤ 3,840Hz	≤ 3,840Hz
Viewing Angle	160° / 160°	160° / 160°	Indoor 160° / 160° Outdoor 160° / 155°	160° / 120°
Physical Density	112,896 pixels/m ²	82,944 pixels/m ²	65,536 pixels/m ²	46,656 pixels/m ²
Module Dimension	250 x 500mm	250 x 500mm	250 x 500mm	250 x 500mm
Cabinet Resolution	168 x 336pixels	144 x 288pixels	128 x 256pixels	108 x 216pixels
Cabinet Dimensions	500 x 1000 x 68mm	500 x 1000 x 68mm	500 x 1000 x 68mm	500 x 1000 x 68mm
Cabinet Weight	15.5kg	12.5kg	12.5kg	12.5kg
Max Power Consumption	660W /m ²	660W /m ²	660W /m ²	660W /m ²
Avg Power Consumption	220W /m ²	220W /m ²	220W /m ²	220W /m ²
Voltage Range	AC110-220V 50-60Hz	AC110-220V 50-60Hz	AC110-220V 50-60Hz	AC110-220V 50-60Hz
Operating Temperature	-10°C ~ +45°C	-10°C ~ +45°C	-10°C ~ +45°C	-10°C ~ +45°C
Half Life	100,000hrs	100,000hrs	100,000hrs	100,000hrs
Protection Rating	Indoor IP30	Indoor IP30	Indoor IP30 Outdoor IP65 (front) IP54 (rear)	Indoor IP30 Outdoor IP65 (front) IP54 (rear)
Verification	SGS, CE, EMC, LVD, FCC, ETL, RoHS	SGS, CE, EMC, LVD, FCC, ETL, RoHS	SGS, CE, EMC, LVD, FCC, ETL, RoHS	SGS, CE, EMC, LVD, FCC, ETL, RoHS

ER series PLUS version

On certain ranges of the ER series screen, we can offer a full black outdoor LED chips for increased contrast ratios.

ER series PRO version

The ER series PRO version features standard white face black frame LED chips.

	ER4.8	ER5	ER6	ER7
Pixel Pitch	4.81mm	5.95mm	6.94 mm	7.81 mm
Product Application	Indoor / Rental	Indoor / Outdoor / Rental	Indoor/ Outdoor / Rental	Outdoor / Rental
LED Arrangement	3 IN 1 SMD	3 IN 1 SMD	3 IN 1 SMD	3 IN 1 SMD
Brightness Level	1,200nits	Indoor 1,200nits Outdoor 5,000nits	Indoor 1,200nits Outdoor 5,000nits	5,000nits
Refresh Rate	≤ 3,840Hz	≤ 3,840Hz	≤ 3,840Hz	≤ 3,840Hz
Viewing Angle	Indoor 160° / 160°	Indoor 160° / 160° Outdoor 160° / 130°	Indoor 160° / 160° Outdoor 160° / 120°	160° / 100°
Physical Density	43,264 pixels/m ²	28,224 pixels/m ²	20,736 pixels/m ²	16,384 pixels/m ²
Module Dimension	250 x 500mm	250 x 500mm	250 x 500mm	250 x 500mm
Cabinet Resolution	104 x 208pixels	84 x 168pixels	72 x 144pixels	64 x 128pixels
Cabinet Dimensions	500 x 1000 x 68mm	500 x 1000 x 68mm	500 x 1000 x 68mm	500 x 1000 x 68mm
Cabinet Weight	12.5kg	12.5kg	12.5kg	12.5kg
Max Power Consumption	660W /m ²	660W /m ²	660W /m ²	660W /m ²
Avg Power Consumption	220W /m ²	220W /m ²	220W /m ²	220W /m ²
Voltage Range	AC110-220V 50-60Hz	AC110-220V 50-60Hz	AC110-220V 50-60Hz	AC110-220V 50-60Hz
Operating Temperature	-10°C ~ +45°C	-10°C ~ +45°C	-10°C ~ +45°C	-10°C ~ +45°C
Half Life	100,000hrs	100,000hrs	100,000hrs	100,000hrs
Protection Rating	IP30	Indoor IP30 Outdoor IP65 (front) IP54 (rear)	Indoor IP30 Outdoor IP65 (front) IP54 (rear)	Outdoor IP65 (front) IP54 (rear)
Verification	SGS, CE, EMC, LVD, FCC, ETL, RoHS	SGS, CE, EMC, LVD, FCC, ETL, RoHS	SGS, CE, EMC, LVD, FCC, ETL, RoHS	SGS, CE, EMC, LVD, FCC, ETL, RoHS

ER series PLUS version

On certain models of the ER series screen, we can offer a full black outdoor LED chips for increased contrast ratios.

ER series PRO version

The ER series PRO version features standard white face black frame LED chips.

VUEPIX INFILED

CONTACT US

Contact our VuePix Infiled experts
for further product information

EMAIL INFO@VUEPIX.TV

WEB WWW.VUEPIX.TV